

fcml surfaces

/ A unit of FCML India

Weave



Weave

The background and foreground contrast makes these tiles stand out, a juxtaposition of vibrant colors on a stone grey base. Following the process of dry screen printing, a weave like pattern is constructed using multiple color layers on top of one another. These lines intersect and create abstraction through their movement.





19.7x19.7 Cm

Weave



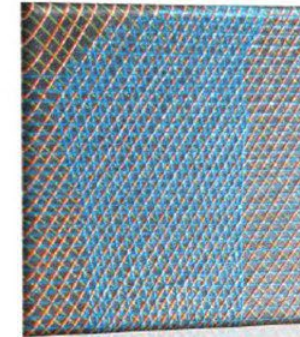
Weave 1



Weave 2



Weave 3



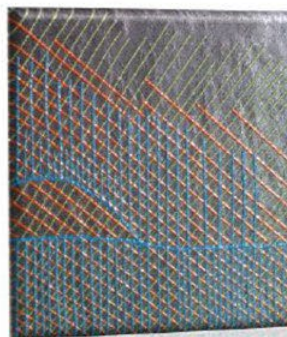
Weave 4



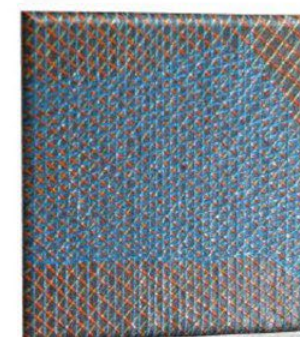
Weave 5



Weave 6



Weave 7



Weave 8



IKIGAI | an
Reimagining Surfaces | feml
Interior
 Design
 Product
 Company
 venture

New Delhi | Mumbai | Bangalore | Chennai | Pune

Reach us on :

+91 8130795071 | delhisurfaces@fcmindia.com



IKIGAI | an
Reimagining Surfaces | feml
Interior
 Design
 Product
 Company
 venture

Fashion Catalogues | Lookbooks | Dossier
www.ikigaisurfaces.com