

# fcm surfaces

LET'S CREATE INSPIRED WORK TOGETHER

A Division of FCML India

KOKORO



# fcm surfaces

LET'S CREATE INSPIRED WORK TOGETHER

Taking inspiration from the wonder of everyday things, 'Kokoro' features ceramic and carved tiles in neutral tones.

The Japanese word 'Kokoro' has no exact english equivalent. It can be translated to mind, heart, emotions and feelings--all at once.

Our collection captures this spirit, showcasing simple base tones to fit into any narratives. 'Kokoro' brings the heart of materials to the places you live in.

• Metallic tones

• Dual Tone

fcm surfaces



# KOKORO

## FINELINE

Transform the Large Format tiles using celluloid inks and copper dust to recreate an interesting fine lines imagery in different patterns:

Stream – Reinterpreting texture lines like a stream

Balance – Balancing lines to form triangles.

Hemp Flowers – Playing with density, intrinsic just like the orchids

Seven Jewels – Creating drama through play of intersection

# Dual Tone

## Ceramic tiles

60 x 60 cms

4 basic tones + 4 surface emulations = Infinite Possibilities

Technique:

Silk screen dry pigment application on ceramic base.

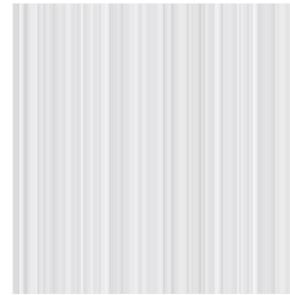


Avorio

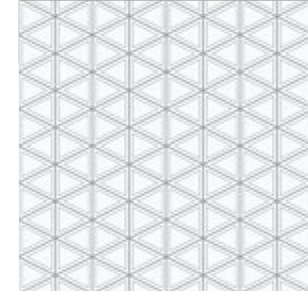
Taupe

Grigio

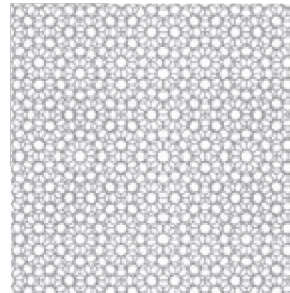
Nero



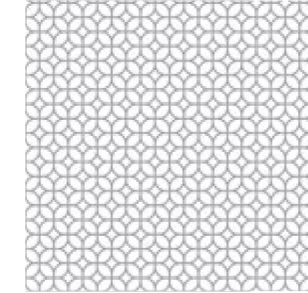
Stream



Balance



Hemp flowers



Seven jewels



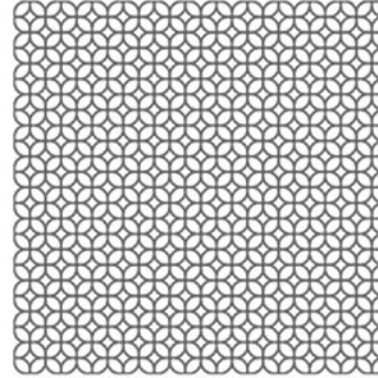
Balance in Copper finish  
Exhibited in D/code 2018 by Ashiesh Shah

# Stream





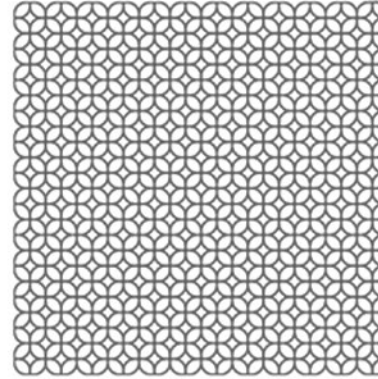
## SEVEN JEWELS



Dual Tone  
Ceramic tiles  
60 x 60 cms

Technique:  
Silk screen dry pigment  
application on ceramic base.

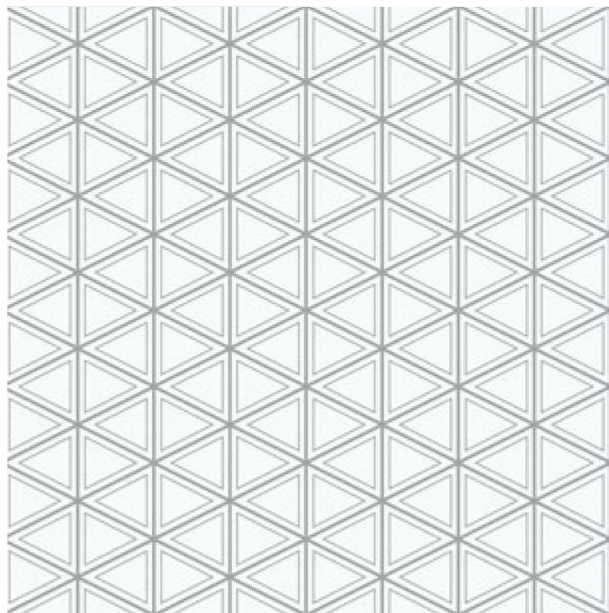
## SEVEN JEWELS



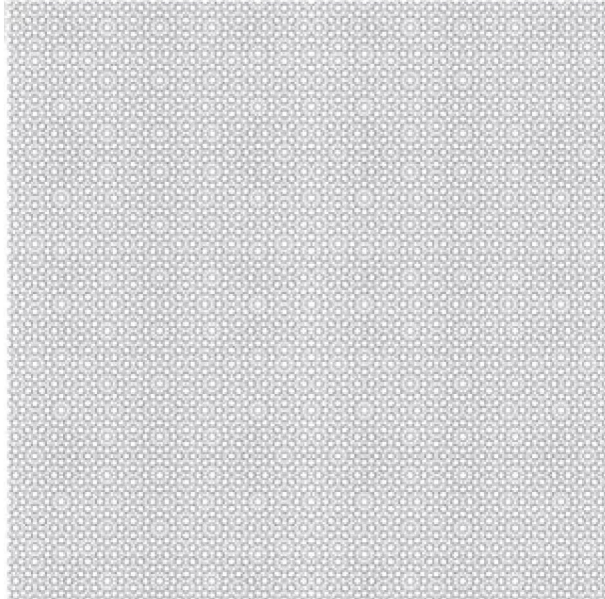
Dual Tone  
Ceramic tiles  
60 x 60 cms

Technique:  
Silk screen dry pigment  
application on ceramic base.

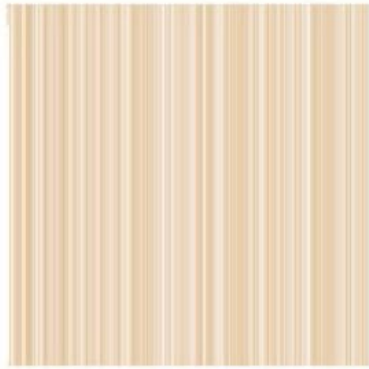
# Balance



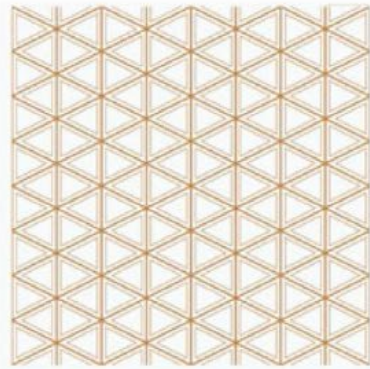
Hemp flower



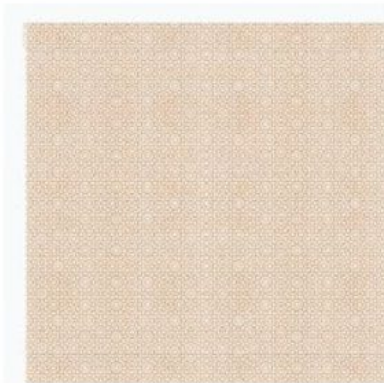
# Metallic tones



Stream in Copper finish



Balance in Copper finish



Hemp flowers in Copper finish

\*Please note :

Metallic tones are available only in 'stream' and 'balance', on all 4 tones as mentioned on page no. 5.



Avorio

Taupe

Grigio

Nero



Balance in Copper finish

Exhibited in D/code 2018 by Ashiesh Shah

# FCML COLLECTIONS

KOKORO

FINELINE

MURANO

STENCIL

METALLIC QUILT

METALLIC TONE  
DUAL TONE

STONE FINISH  
SAND FINISH

SANDBLAST

NERO  
GRIGIO

STREAM  
BALANCE  
HEMP FLOWER  
SEVEN JEWELS

MURANO GOLD  
MURANO SILVER  
MURANO BRONZE

BOLD  
BRACE  
BROOCH  
LOTUS

6 DIFFERENT  
SURFACE EMULATIONS

Avorio, Taupe,  
Grigio, Nero

Avorio, Taupe,  
Grigio, Nero, Beige,  
Bianco

Avorio, Taupe,  
Grigio, Nero, Beige,  
Bianco

Grigio, Nero



**IKIGAI** | an  
*Reimagining Surfaces* | fcml  
venture

New Delhi | Mumbai | Bangalore | Chennai | Pune

Reach us on :

+91 8130795071 | delhisurfaces@fcmlindia.com

