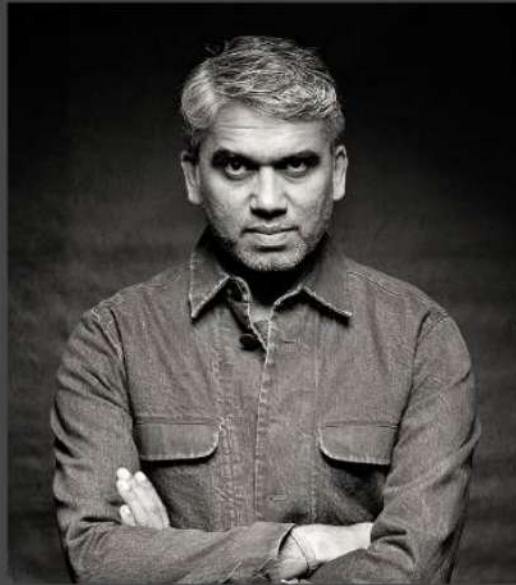




SHERKHANUM



RAJESH PRATAP SINGH

Rajesh Pratap Singh is an Indian designer known for his design innovation. He hails from Rajasthan and has worked in the Fashion Industry in India and Italy before introducing his own line of men's and women's clothing in 1997.

Rajesh has over the years created his unique signature style that subtly draws from his Indian roots to craft artisanal garments that stand apart due to their faultlessly clean lines, careful detailing and international silhouettes. His work epitomizes simplicity, yet on closer look reveals his obsessive attention to detail. Rajesh's reserve reflects in his styling which combines the modern with the traditional in an understated design aesthetic. His clothes have a global appeal yet remain passionately Indian.

Rajesh is a recipient of several awards in recognition of his design and creativity. Rajesh was awarded the National Award in 2019 by the Government of India for "Outstanding contribution to Indian Fashion" and simplicity of design. GQ named him Man of the Year in 2018 for "Sustainable Fashion". Rajesh received "Designer of the Year" in the first GQ Men of the Year Awards in India in September 2009. Newsweek June 2009 named Rajesh as one of India's most talented and creative designers. Dec 2010 saw him receive the prestigious EDIDA award from Elle Décor. He received the Kingfisher Designer of the Year Award both in 2001 and 2005. He also received the Best Menswear Designer award at the Fashion Awards held in 1996.

Rajesh's textile repertoire extends from experimenting with Ikat weaves, handloom indigos, chanderi and extensively Benares weaves. He has also developed a range of sarees from all these regions.

Internationally, Rajesh has been showcasing his collections in Paris. He has done catwalk shows in the past at the prestigious Paris Fashion Week and is represented internationally in various niche stores. Rajesh had also undertaken costume designing for the French Opera "Padmavati by Albert Roussel". The opera was staged at the Theatre du Chatelet in Paris as well as in Spoleto in Italy. He was the first Indian designer to be invited by VOGUE Italy to do a show at the Milano Unica in Milan City in 2011. Rajesh has been participating in the Pitti Uomo in Florence Italy and Tranoi in Paris, France for showcasing his collections.

In January 2013, Rajesh was appointed as first WOOLMARK Ambassador of India. June 2013 saw the Kingdom of Bhutan invite Rajesh to do a show with Bhutanese fabrics for the opening of the Royal Textile Museum and his creations are now permanently housed there. He has been collaborating with the Austrian company Lenzing for textile developments using the sustainable Tencel yarn.

Rajesh's garments have always transcended the passage of time and his designs are as relevant today as they were when created. This itself is his philosophy in response to Sustainability.



ELLE
DECO
INTERNATIONAL
DESIGN AWARDS

WINNER 2025

fcml surfaces
LET'S CREATE INSPIRED WORK TOGETHER

PRATAP



ELLE
DECO
INTERNATIONAL
DESIGN AWARDS

WINNER 2025

fcml surfaces
LET'S CREATE INSPIRED WORK TOGETHER

PRATAP



ELLE
DECO
INTERNATIONAL
DESIGN AWARDS

WINNER 2025

fcml surfaces

LET'S CREATE INSPIRED WORK TOGETHER

PRATAP



ELLE
DECO
INTERNATIONAL
DESIGN AWARDS

WINNER 2025

fcml surfaces
LET'S CREATE INSPIRED WORK TOGETHER

PRATAP



**ELLE
DECO**
INTERNATIONAL
DESIGN AWARDS

WINNER 2025

fcml surfaces
LET'S CREATE INSPIRED WORK TOGETHER

PRATAP



ELLE
DECO
INTERNATIONAL
DESIGN AWARDS

WINNER 2025

fcml surfaces
LET'S CREATE INSPIRED WORK TOGETHER

PRATAP



ELLE
DECO
INTERNATIONAL
DESIGN AWARDS

WINNER 2025

fcml surfaces
LET'S CREATE INSPIRED WORK TOGETHER

PRATAP



**ELLE
DECO**
INTERNATIONAL
DESIGN AWARDS

WINNER 2025

fcml surfaces
LET'S CREATE INSPIRED WORK TOGETHER

PRATAP



ELLE
DECO
INTERNATIONAL
DESIGN AWARDS

WINNER 2025

fcml surfaces
LET'S CREATE INSPIRED WORK TOGETHER

PRATAP



SHERKHANUM (BLACK AND BLACK GOLD)



SHERKHANUM (BLACK GOLD)

PRATAP



Sherkhanum (Black)
Top Left
Size | 300 x 450 mm



Sherkhanum (Black)
Top Right
Size | 300 x 450 mm



Sherkhanum (Black)
Bottom Left
Size | 300 x 450 mm



Sherkhanum (Black)
Bottom Right
Size | 300 x 450 mm



Sherkhanum
(Black)
Size | 300 x 450 mm

SHERKHANUM (BLACK / EMBOSSED)

Can be used on wall and floor



Sherkhanum (Black)
Full Pattern
* This is a set of four tiles



Sherkhanum (Black Gold)
Top Left
Size | 300 x 450 mm



Sherkhanum (Black Gold)
Top Right
Size | 300 x 450 mm



Sherkhanum (Black Gold)
Bottom Left
Size | 300 x 450 mm



Sherkhanum (Black Gold)
Bottom Right
Size | 300 x 450 mm



Sherkhanum
(Black Gold)
Size | 300 x 450 mm

SHERKHANUM (BLACK GOLD)

Can be used on wall



Sherkhanum (Black Gold)
Full Pattern
* This is a set of four tiles



ELLE
DECO
INTERNATIONAL
DESIGN AWARDS

WINNER 2025

fcml surfaces
LET'S CREATE INSPIRED WORK TOGETHER

PRATAP



**ELLE
DECO**
INTERNATIONAL
DESIGN AWARDS

WINNER 2025

fcml surfaces
LET'S CREATE INSPIRED WORK TOGETHER

PRATAP



WINNER 2025

fcml surfaces
LET'S CREATE INSPIRED WORK TOGETHER

PRATAP



WINNER 2025

fcml surfaces
LET'S CREATE INSPIRED WORK TOGETHER

PRATAP



ELLE
DECO
INTERNATIONAL
DESIGN AWARDS

WINNER 2025

fcml surfaces
LET'S CREATE INSPIRED WORK TOGETHER

PRATAP



ELLE
DECO
INTERNATIONAL
DESIGN AWARDS

WINNER 2025

fcml surfaces
LET'S CREATE INSPIRED WORK TOGETHER

PRATAP



ELLE
DECO
INTERNATIONAL
DESIGN AWARDS

WINNER 2025

fcml surfaces
LET'S CREATE INSPIRED WORK TOGETHER

PRATAP



ELLE
DECO
INTERNATIONAL
DESIGN AWARDS

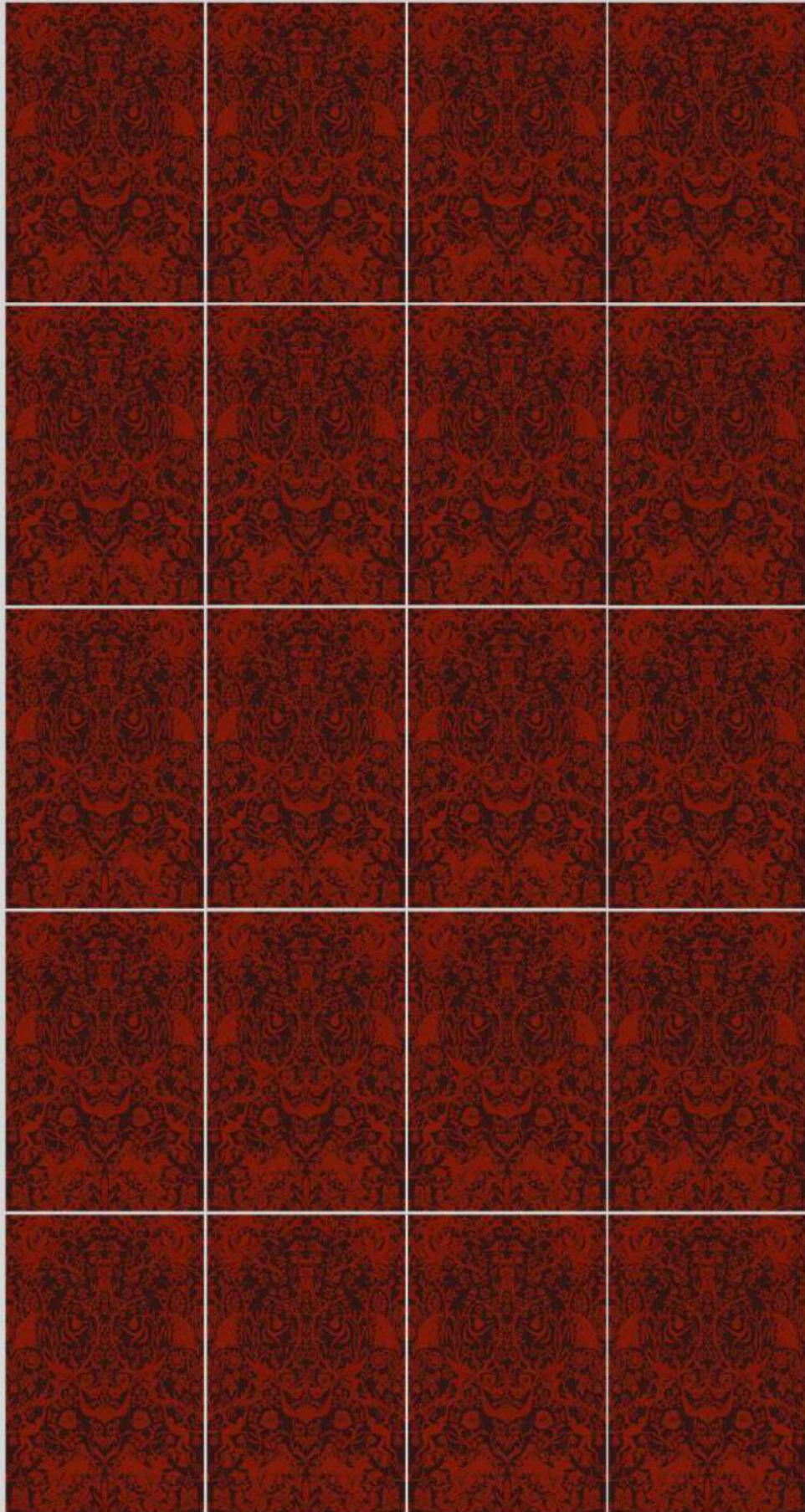
WINNER 2025

fcml surfaces
LET'S CREATE INSPIRED WORK TOGETHER

PRATAP



SHERKHANUM (RED AND GOLD)



SHERKHANUM (RED)

PRATAP



Sherkhanum (Red)
Top Left
Size | 300 x 450 mm



Sherkhanum (Red)
Top Right
Size | 300 x 450 mm



Sherkhanum (Red)
Bottom Left
Size | 300 x 450 mm



Sherkhanum (Red)
Bottom Right
Size | 300 x 450 mm



Sherkhanum
(Red)
Size | 300 x 450 mm



Sherkhanum (Red)
Full Pattern
* This is a set of four tiles

SHERKHANUM (RED)

Can be used on wall and floor



Sherkhanum (Red Gold)
Top Left
Size | 300 x 450 mm



Sherkhanum (Red Gold)
Top Right
Size | 300 x 450 mm



Sherkhanum (Red Gold)
Bottom Left
Size | 300 x 450 mm



Sherkhanum (Red Gold)
Bottom Right
Size | 300 x 450 mm



Sherkhanum
(Red Gold)
Size | 300 x 450 mm



Sherkhanum (Red Gold)
Full Pattern
* This is a set of four tiles

SHERKHANUM (RED GOLD)

Can be used on wall



ELLE
DECO
INTERNATIONAL
DESIGN AWARDS

WINNER 2025

fcml surfaces
LET'S CREATE. INSPIRED WORK TOGETHER

PRATAP



ELLE
DECO
INTERNATIONAL
DESIGN AWARDS

WINNER 2025

fcml surfaces

LET'S CREATE INSPIRED WORK TOGETHER

PRATAP



ELLE
DECO
INTERNATIONAL
DESIGN AWARDS

WINNER 2025

fcml surfaces
LET'S CREATE INSPIRED WORK TOGETHER

PRATAP



ELLE
DECO
INTERNATIONAL
DESIGN AWARDS

WINNER 2025

fcml surfaces

LET'S CREATE INSPIRED WORK TOGETHER

PRATAP



ELLE
DECO
INTERNATIONAL
DESIGN AWARDS

WINNER 2025

fcml surfaces
LET'S CREATE INSPIRED WORK TOGETHER

PRATAP



SHERKHANUM (GREEN AND GREEN GOLD)



SHERKHANUM (GREEN)

PRATAP



Sherkhanum (Green)
Top Left
Size | 300 x 450 mm



Sherkhanum (Green)
Top Right
Size | 300 x 450 mm



Sherkhanum (Green)
Bottom Left
Size | 300 x 450 mm



Sherkhanum (Green)
Bottom Right
Size | 300 x 450 mm



Sherkhanum
(Green)
Size | 300 x 450 mm



Sherkhanum (Green)
Full Pattern
* This is a set of four tiles

SHERKHANUM (GREEN)

Can be used on wall and floor



Sherkhanum (Green Gold)
Top Left
Size | 300 x 450 mm



Sherkhanum (Green Gold)
Top Right
Size | 300 x 450 mm



Sherkhanum (Green Gold)
Bottom Left
Size | 300 x 450 mm



Sherkhanum (Green Gold)
Bottom Right
Size | 300 x 450 mm



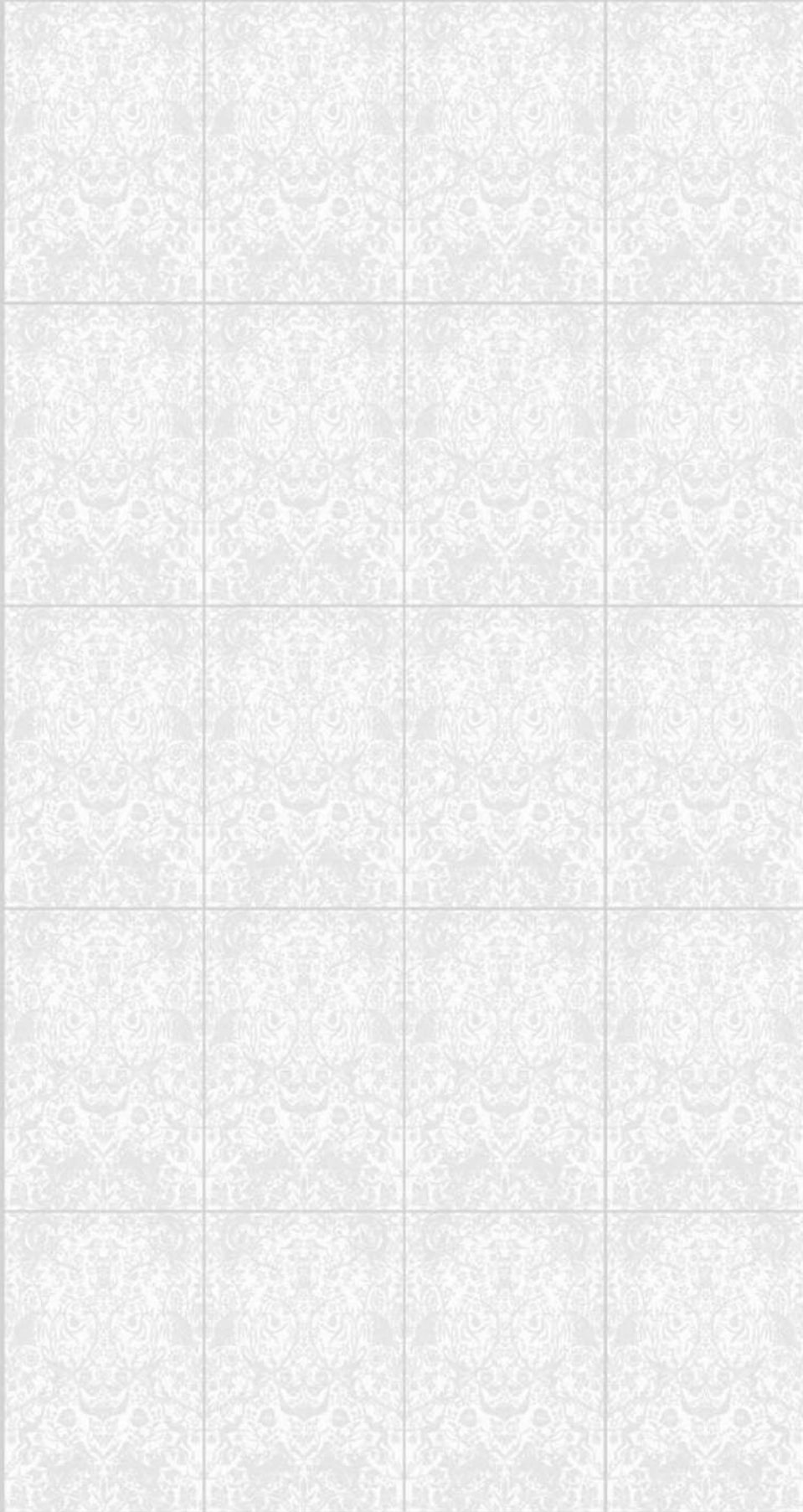
Sherkhanum
(Green Gold)
Size | 300 x 450 mm



Sherkhanum (Green Gold)
Full Pattern
* This is a set of four tiles

SHERKHANUM (GREEN GOLD)

Can be used on wall



SHERKHANUM (WHITE EMBOSSED)



SHERKHANUM (WHITE EMBOSSED)

PRATAP



Sherkhanum (White)
Top Left
Size | 300 x 450 mm



Sherkhanum (White)
Top Right
Size | 300 x 450 mm



Sherkhanum (White)
Bottom Left
Size | 300 x 450 mm



Sherkhanum (White)
Bottom Right
Size | 300 x 450 mm



Sherkhanum
(White)
Size | 300 x 450 mm

SHERKHANUM (WHITE / EMBOSSED)

Can be used on wall and floor



Sherkhanum (White)
Full Pattern
* This is a set of four tiles

IKIGAI | an
Reimagining Surfaces | fcml  venture

Reach us on :

📞 +91 8130795071

✉ delhisurfaces@fcmlindia.com

🌐 www.ikigaisurfaces.com



📷 [fcmlsurfaces](https://www.instagram.com/fcmlsurfaces)