



*Aneeth Arora*

aneeth arora

*"Beauty is in simplicity and in bringing a modern twist to old school to relive the vintage"*



## Kintsugi: the art of broken pieces

Inspired by an ancient Japanese craftsmen practice, wherein the repair could be a restoration in which the damage is incorporated into the aesthetic of the restored item and becomes artistically "better than new." The philosophy behind this technique is to recognise the history of the broken object and to visibly incorporate the repair into the new piece instead of disguising it. The process usually results in something more beautiful than the original, giving the broken object a new life or rebirth. The broken tiles have been used and put together to create a new surface.



## Stories on a Telia Rumal

These tiles bring the look of historic ikat fabric styles to ceramic tiles in electric wall and floor tile patterns. The motifs used in collection have been especially developed for Peru on an ikat telia rumal with a twist. The combination of classic ikat patterns from ancient textiles to a new medium, incorporate an earthy texture in the Grey Telia Rumal collection and a contrast Blue Telia Rumal, creating a seamless pattern for different interior spaces.



## Vintage Garden

These ceramic tiles are created by combining traditional ceramic techniques with the latest digital innovations, to capture the exquisite illustrations of botanical paintings. Named after Spanish flowers, these botanical tiles are an eclectic mix of designs that draw inspirations from our much loved treasures of the past.

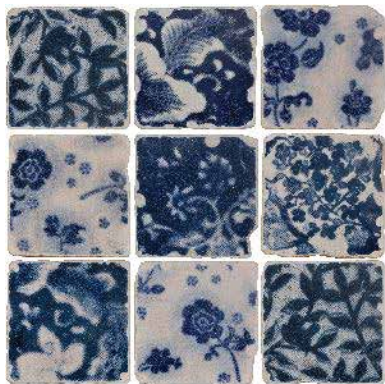


Telia Rumal: Hand silk screen printed on a fabric like textured surface

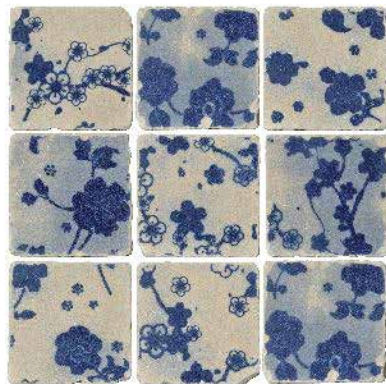


Kintsugi: Hand silk screen printed, tumbled edges

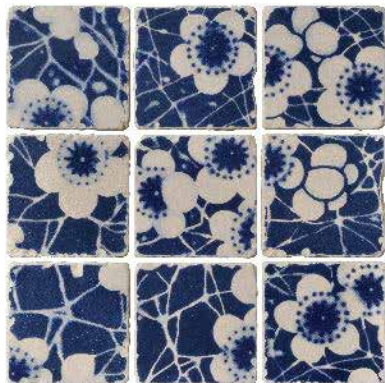
*elements*  
aneeth arora



Sakura Dark  
9.6x9.6 cm



Sakura Light  
9.6x9.6 cm



Sakura Flower  
9.6x9.6 cm



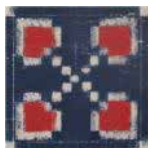
Sakura Small Flower and Sakura Line  
9.6x9.6 cm



Sakura Flower Small  
5cm in mesh

BLUE TELIA RUMAL

Size: 14.8x14.8 cm



Gulab BL B



Moongi BL B



Heera BL B



Gunj BL B



Jhalaar BL B



Kamal BL B



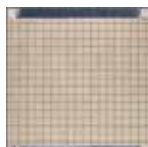
Dil BL B



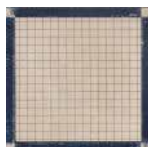
Rui Phool BL B



Chalk BL B



Chalk Border 1 BL



Chalk Border 2 BL

BLUE TELIA RUMAL SMALL

Size: 7.2x7.2 cm



Gulab BL S



Moongi BL S



Heera BL S



Gunj BL S



Jhalaar BL S



Kamal BL S



Dil BL S



Rui Phool BL S



Chalk BL S



Chalk Border 2 BL

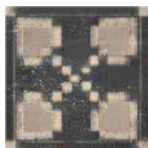


Chalk Border BL 1 S

Size: 7.2 x 14.8cm

### GREY TELIA RUMAL

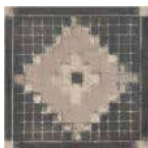
Size: 14.8x14.8 cm



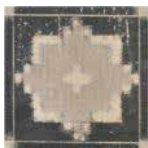
Gulab GR B



Moongi GR B



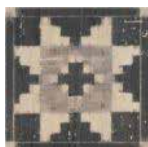
Heera GR B



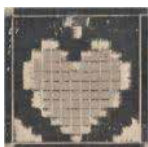
Gunj GR B



Jhalaar GR B



Kamal GR B



Dil GR B



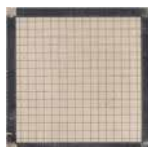
Rui Phool GR B



Chalk GR B



Chalk Border 1 GR



Chalk Border 1 GR

### GREY TELIA RUMAL SMALL

Size: 7.2x7.2 cm



Gulab GR S



Moongi GR S



Heera GR S



Gunj GR S



Jhalaar GR S



Kamal GR S



Dil GR S



Rui Phool GR S



Chalk GR S



Chalk Border 2 GR S



Chalk Border GR 1 S

Size: 7.2 x 14.8cm

aneeth arora

vintage garden collection



Ambrosia



Bella



Cynthia



Rosemaria



Delila



Florentina



Estella



Isabela



Marina



Benita



Lolita



Valentina

Available Sizes: 25.6 X 38 & 11 X 11 cm

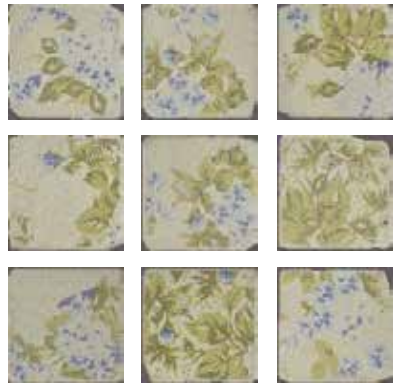
aneeth arora

vintage garden collection

DARK GARDEN



LIGHT GARDEN



Sizes: 9.6 x 9.6 cm