

fcm surfaces

LET'S CREATE INSPIRED WORK TOGETHER

A Division of FCML India



KOKORO

fcm surfaces

LET'S CREATE INSPIRED WORK TOGETHER

Taking inspiration from the wonder of everyday things, 'Kokoro' features ceramic and carved tiles in neutral tones.

The Japanese word 'Kokoro' has no exact english equivalent. It can be translated to mind, heart, emotions and feelings--all at once.

Our collection captures this spirit, showcasing simple base tones to fit into any narratives. 'Kokoro' brings the heart of materials to the places you live in.

• Metallic tones

• Dual Tone

fcm surfaces



KOKORO

FINELINE

Transform the Large Format tiles using celluloid inks and copper dust to recreate an interesting fine lines imagery in different patterns:

Stream - Reinterpreting texture lines like a stream

Balance - Balancing lines to form triangles.

Hemp Flowers - Playing with density, intrinsic just like the orchids

Seven Jewels - Creating drama through play of intersection

Dual Tone

Ceramic tiles

60 x 60 cms

4 basic tones + 4 surface emulations = Infinite Possibilities

Technique:

Silk screen dry pigment application on ceramic base.



Avorio

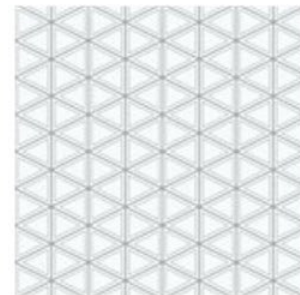
Taupe

Grigio

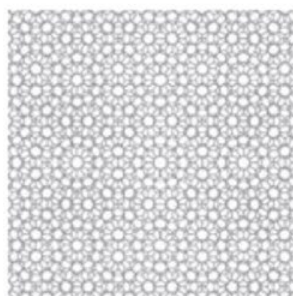
Nero



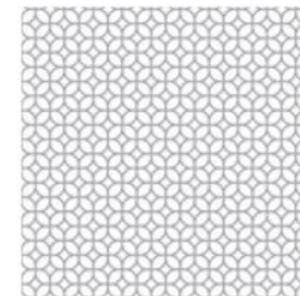
Stream



Balance



Hemp flowers



Seven jewels



Balance in Copper finish
Exhibited in D/code 2018 by Ashiesh Shah

IKIGAI
Reimagining Surfaces

an
fcm
venture
Innovative
Lifestyle
Products
Company

2018

www.ikigaisurfaces.com

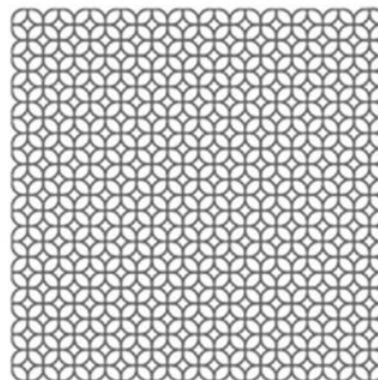
Kokoro Finline

Stream





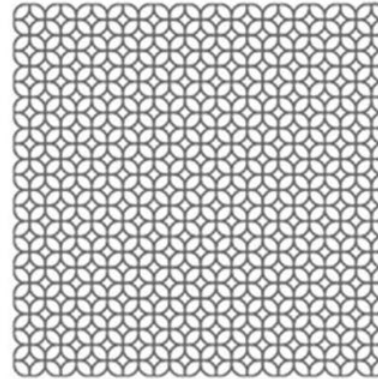
SEVEN JEWELS



Dual Tone
Ceramic tiles
60 x 60 cms

Technique:
Silk screen dry pigment
application on ceramic base.

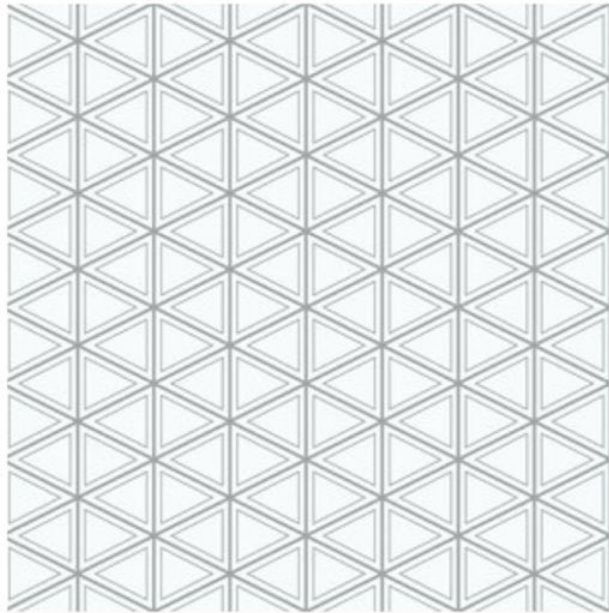
SEVEN JEWELS



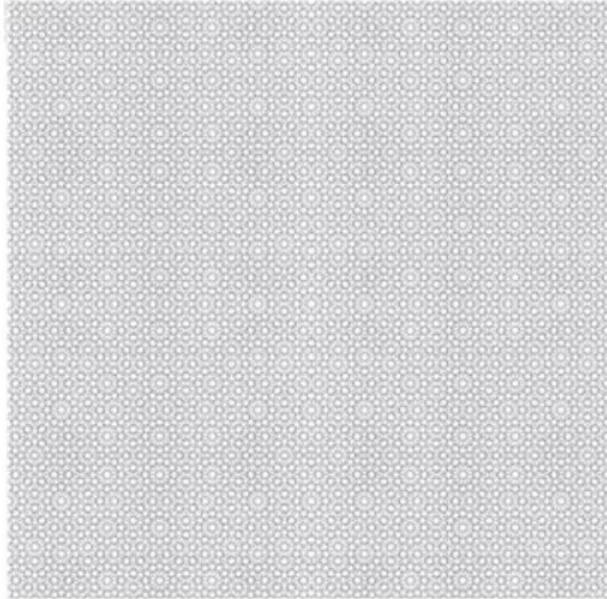
Dual Tone
Ceramic tiles
60 x 60 cms

Technique:
Silk screen dry pigment
application on ceramic base.

Balance



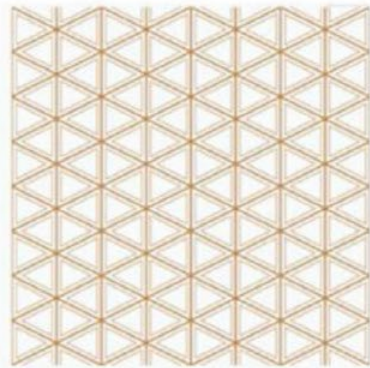
Hemp flower



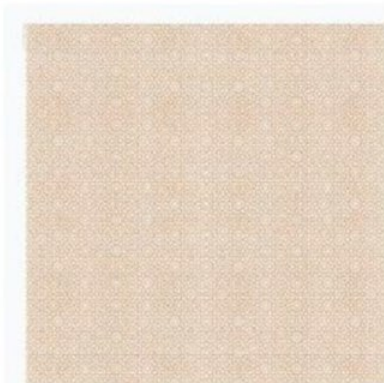
Metallic tones



Stream in Copper finish



Balance in Copper finish



Hemp flowers in Copper finish

*Please note :

Metallic tones are available only in 'stream' and 'balance', on all 4 tones as mentioned on page no. 5.

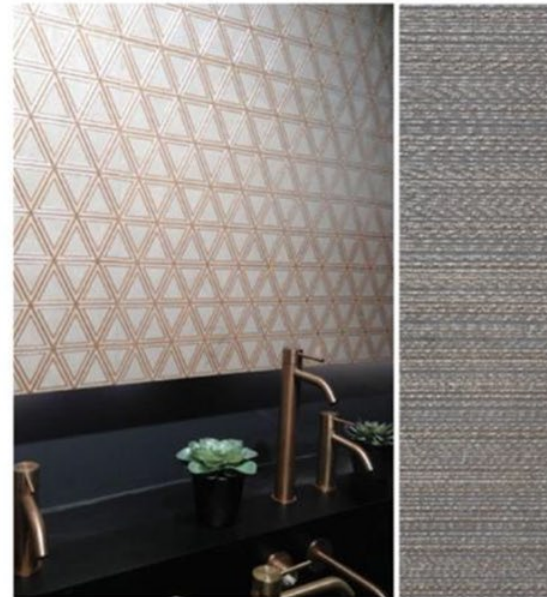


Avorio

Taupe

Grigio

Nero



Balance in Copper finish

Exhibited in D/code 2018 by Ashiesh Shah

KOKORO

FINELINE

MURANO

STENCIL

METALLIC QUILT

METALLIC TONE
DUAL TONE

STONE FINISH
SAND FINISH

SANDBLAST GOLD
SANDBLAST SILVER

NERO
GRIGIO

STREAM
BALANCE
HEMP FLOWER
SEVEN JEWELS

MURANO GOLD
MURANO SILVER
MURANO BRONZE

BOLD
BRACE
BROOCH
LOTUS

6 DIFFERENT
SURFACE EMULATIONS



Avorio
Taupe
Grigio
Nero



Avorio
Taupe
Grigio
Nero
Beige
Bianco



Avorio
Taupe
Grigio
Nero
Beige
Bianco



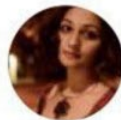
Grigio
Nero



Designers



Shanvi Rastogi



Srishti Dube

fcml surfaces

LET'S CREATE INSPIRED WORK TOGETHER

Reach us on:

011 2637 2704 / info@fcmlindia.com / www.fcmlindia.com

Showroom Address:

Delhi The FCML Store, Sultanpur Chowk, Mehrauli Gurgaon Road, New Delhi, 110030
 Mumbai The FCML Store, Shakti Mill Lane, Mahalaxmi, Mumbai, 400011
 Bangalore The FCML Store, No. 2, I and II floor, 80 Feet Road, Indiranagar, Bangalore.
 Pune The FCML Store, Mangalwar Peth, Pune.

Corporate Address:

A - 217, Okhla, Industrial Area Phase -I, New Delhi, Delhi 110020

© 2019. All photographs, texts, slogans, designs, images and all other content in the catalogue are the property of FCML.

